



## Quick Setup Guide

### WisCloud Wireless Ceiling Access Point

Models: WCAP / WCAP-AC / WCAP-HP / WCAP-AC-PRO / WCAP-AC-L  
Version: 1.0

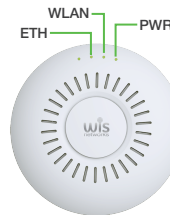
## 1 Interface

### LED



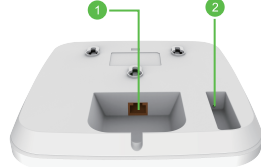
LED	Description
Green	Device Online
Orange	Device Offline
Green with flashing	Self-Location
Orange with flashing	System Failure

### LED



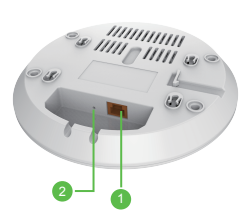
LED	Description
PWR	On: the radio is powered up
WLAN	On: the wireless is available Flashing: wireless data transferring
ETH	On: the wire connection is available Flashing: wire data transferring

### Interface



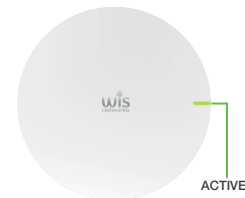
No.	Description
1	Ethernet port
2	Reset button Press more than 8s to restore factory settings

### Interface



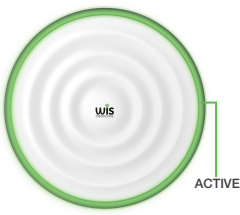
No.	Description
1	Ethernet port
2	Reset button Press more than 8s to restore factory settings

### LED



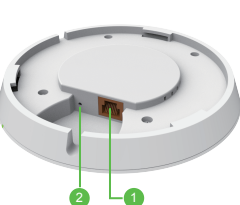
LED	Description
Green	Device Online
Orange	Device Offline
Green with flashing	Self-Location
Orange with flashing	System Failure

### LED



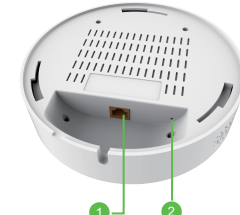
LED	Description
Green	Device Online
Orange	Device Offline
Green with flashing	Self-Location
Orange with flashing	System Failure

### Interface



No.	Description
1	Ethernet port
2	Reset button Press more than 8s to restore factory settings

### Interface



No.	Description
1	Ethernet port
2	Reset button Press more than 8s to restore factory settings

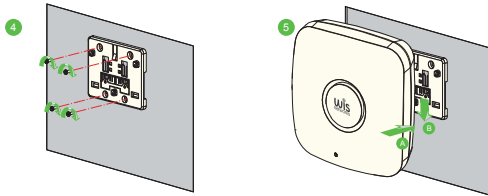
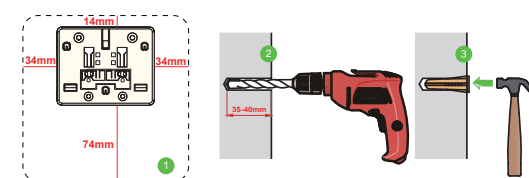
## 2 Install the radio

### Instructions before installing

- Locate a suitable place with wall-mount or ceiling-mount.
- Do not install in illegal places to avoid violating the local regulatory rules.
- You may need tools below.



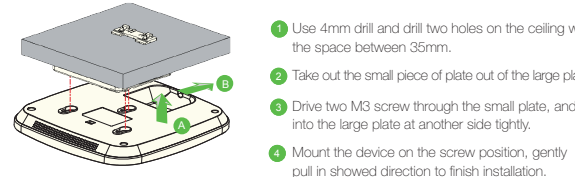
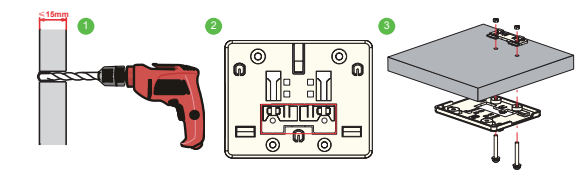
### Install WCAP-AC on the wall



- 1 Mark the drilling position according to the diagram.
- 2 Use 6mm drill and drill the hole depth 35-40mm.
- 3 Drive 3 expansion screw into the hole with a hammer.
- 4 Drive the self-tapping screw.
- 5 Mount the device on the screw position, then gently pull in showed direction to complete the installation

**ATTENTION**  
Please plug in the Ethernet cable first before the final installation (step 5).

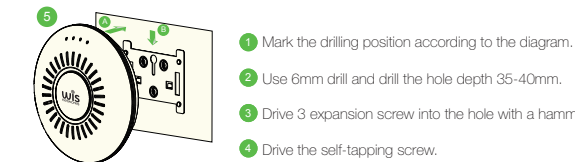
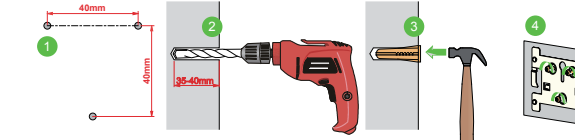
### Install on the ceiling



- 1 Use 4mm drill and drill two holes on the ceiling with the space between 35mm.
- 2 Take out the small piece of plate out of the large plate.
- 3 Drive two M3 screw through the small plate, and into the large plate at another side tightly.
- 4 Mount the device on the screw position, gently pull in showed direction to finish installation.

**ATTENTION**  
The screw in package is only available for mounting on the ceiling not more than 15mm thickness.

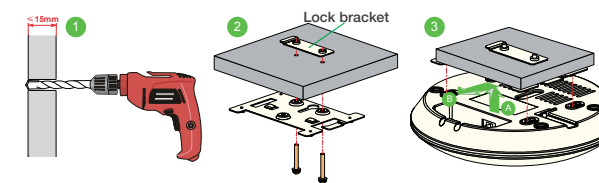
### Install WCAP-HP on the wall



- 1 Mark the drilling position according to the diagram.
- 2 Use 6mm drill and drill the hole depth 35-40mm.
- 3 Drive 3 expansion screw into the hole with a hammer.
- 4 Drive the self-tapping screw.
- 5 Mount the device on the screw position, then gently pull in showed direction to complete the installation

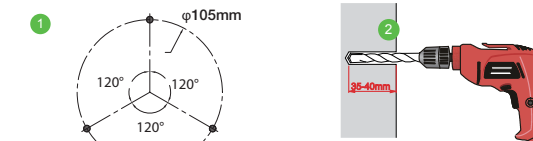
**ATTENTION**  
Please plug in the Ethernet cable first before the final installation (step 5).

### Install on the ceiling



- 1 Use 4mm drill and drill two holes on the ceiling with the space between 40mm.
- 2 Use the screw to lock the mounting bracket and lock bracket on each side of the ceiling.
- 3 Mount the device on the screw position, gently pull in showed direction to finish installation.

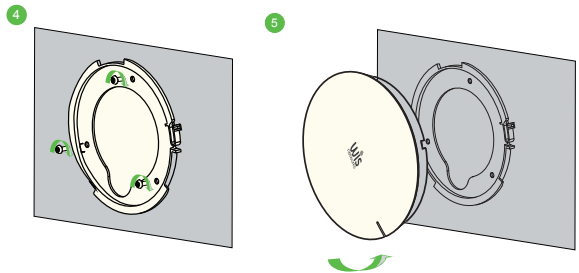
### Install WCAP / WCAP-AC-L on the wall or ceiling



- 1 Mark the drilling position according to the diagram.
- 2 Use 6mm drill and drill the hole depth 35-40mm.



**ATTENTION**  
The hole depth should not be more than 40mm, otherwise the device could not be mounted solidly.

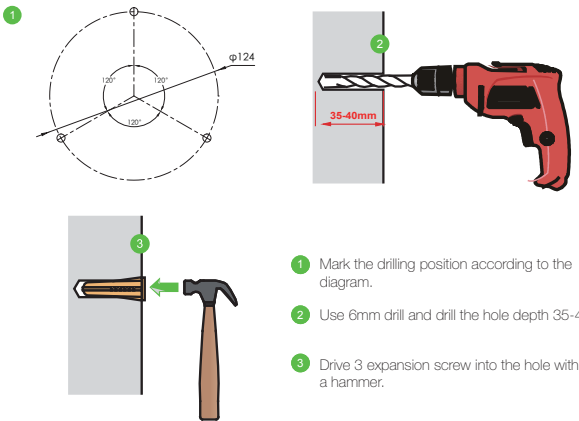


- 4 Drive the self-tapping screw.
- 5 Put the device to the mounting bracket, rotate as shown direction to complete the installation.

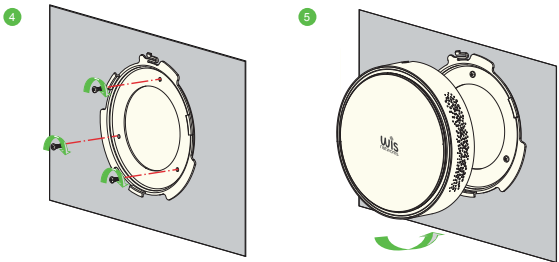
#### ATTENTION

Plug the Ethernet cable first before the final installation.

#### Install WCAP-AC-PRO on the wall



- 1 Mark the drilling position according to the diagram.
- 2 Use 6mm drill and drill the hole depth 35-40mm.
- 3 Drive 3 expansion screw into the hole with a hammer.

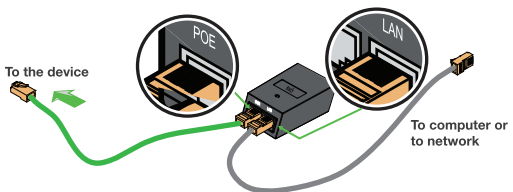


- 4 Drive the self-tapping screw.
- 5 Put the device to the mounting bracket, rotate as shown direction to complete the installation.

#### ATTENTION

Please plug in the Ethernet cable first before the final installation (step 5).

#### Power up the radio



Connect one end of an Ethernet cable to the PoE port of the provided PoE DC Adapter and the other end of the Ethernet cable to the RJ45 port of the device. Then, connect the LAN port of the PoE DC Adapter to a PC or switch using another Ethernet cable. Finally, plug the PoE DC Adapter into a standard electrical wall socket.

#### ATTENTION

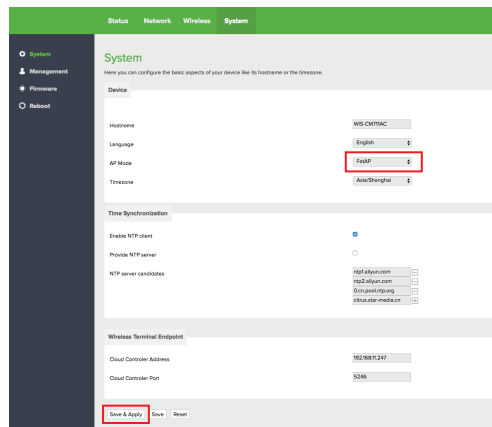
If you use other PoE Adapter which is not provided by Wisnetworks, we can't provide warranty service if device damage caused.

### 3 Stand-alone Use

1. Check all wires are correctly connected.
2. Configure the host system with static IP on the 192.168.1.x (x could be 10~254) subn. et.
3. Using a web browser access 192.168.1.2 (wait a few seconds after device power up).
4. When login page appears enter "admin" in both the username and password fields.



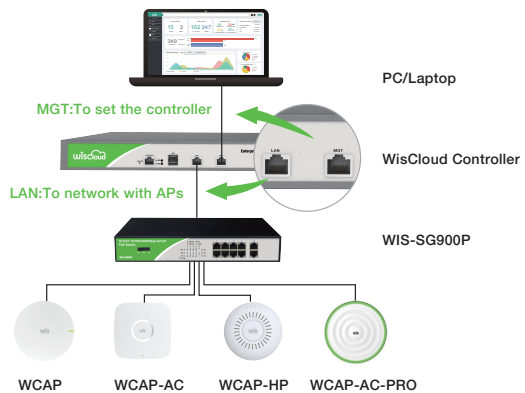
5. Working in FAT AP Mode Choose the AP Mode is FatAP, and click the Save&Apply option.



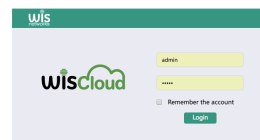
6. For more configuration like operation mode and wireless settings please visit the support site at [wisnetworks.com](http://wisnetworks.com).

### 4 Managed by Controller

1. Check all wires are correctly connected.
2. Put the cloud controller in the same network ( subnet ) with the access point.
3. Connect one PC to the controller MGT port and login web **192.168.188.2**



4. When login page appears enter "admin" in both the username and password fields.



5. Go to the **DEVICE** menu of the controller, and you will find the new access point waiting for admit. Simply press the admit button and then ap will be managed.

6. For more configurations like cloud deployment and wireless settings please visit website [wisnetworks.com](http://wisnetworks.com)

### CE Marking

CE marking on this product represents the product is in compliance with all directives that are applicable to it. Alert sign must be indicated if a restriction on use applied to the product and it must follow the CE marking.



### RoHS/WEEE Compliance Statement



European Directive 2002/96/EC requires that the equipment bearing this symbol on the product and/or its packaging must not be disposed of with unsorted municipal waste. The symbol indicates that this product should be disposed of separately from regular household waste streams. It is your responsibility to dispose of this and other electric and electronic equipment via designated collection facilities appointed by the government or local authorities. Correct disposal and recycling will help prevent potential negative consequences to the environment and human health. For more detailed information about the disposal of your old equipment, please contact your local authorities, waste disposal service, or the shop where you purchased the product.

### FCC STATEMENT

1. This device complies with Part 15 of the FCC Rules. Operation is subject to the following two conditions: (1) This device may not cause harmful interference.
2. This device must accept any interference received, including interference that may cause undesired operation.

Changes or modifications not expressly approved by the party responsible for compliance could void the user's authority to operate the equipment.

NOTE: This equipment has been tested and found to comply with the limits for a Class B digital device, pursuant to Part 15 of the FCC Rules. These limits are designed to provide reasonable protection against harmful interference in a residential installation.

This equipment generates uses and can radiate radio frequency energy and, if not installed and used in accordance with the instructions, may cause harmful interference to radio communications. However, there is no guarantee that interference will not occur in a particular installation. If this equipment does cause harmful interference to radio or television reception, which can be determined by turning the equipment off and on, the user is encouraged to try to correct the interference by one or more of the following measures:

- Reorient or relocate the receiving antenna.
- Increase the separation between the equipment and receiver.
- Connect the equipment into an outlet on a circuit different from that to which the receiver is connected.
- Consult the dealer or an experienced radio/TV technician for help.

This equipment complies with FCC radiation exposure limits set forth for an uncontrolled environment. This equipment should be installed and operated with minimum distance 20cm between the radiator & your body.

### Limited Warranty

Wisnetworks warrants that the product(s) furnished hereunder (the "Product(s)") shall be free from defects in material and workmanship for a period of two (2) year from the date of shipment by Wisnetworks under normal use and operation. Wisnetworks sole and exclusive obligation and liability under the foregoing warranty shall be for Wisnetworks, at its discretion, to repair or replace any Product that fails to conform to the above warranty during the above warranty period. The expense of removal and reinstallation of any Product is not included in this warranty. The warranty period of any repaired or replaced Product shall not extend beyond its original term.

### Warranty Condition

The above warranty does not apply if the Product:

- (a) has been modified and/or altered, or an addition made thereto, except by Wisnetworks, or our authorized representatives, or as approved by Wisnetworks in writing;
- (b) has been painted, rebranded or physically modified in any way;
- (c) has been damaged due to errors or defects in cabling;
- (d) has been subjected to misuse, abuse, negligence, abnormal physical, electromagnetic or electrical stress, including lightning strikes, or accident;
- (e) has been damaged or impaired as a result of using third party firmware;
- (f) has no original Wisnetworks MAC/SN label, or is missing any other original Wisnetworks label(s);
- (g) human reasons without according to the guide or user manual.

In addition, the above warranty shall apply only if: the product has been properly installed and used at all times in accordance, and in all material respects, with the applicable Product documentation; all Ethernet cabling runs use CAT5 (or above), and for outdoor installations, shielded Ethernet cabling is used, and for indoor installations, indoor cabling requirements are followed.

### Online Support

For more guide and help, please go to [www.wisnetworks.com/support/](http://www.wisnetworks.com/support/) [community.wisnetworks.com](http://community.wisnetworks.com)  
You can contact email [support@wisnetworks.com](mailto:support@wisnetworks.com)  
We'll reply you within one weekday.

