

FE-501DM

5MP Fisheye Indoor PoE Dome Camera

- Maximum 15fps@1920x1920
- H.264 MPEG4 and MJPEG Encoder
- Hardware Dewarp via Fisheye Processor
- Minimum 0.1 Lux for Night Vision
- ROI (Region of Interest) with e-PTZ Function
- Removable IR-Cut Filter
- WDR Enhancement
- 5 Independent Streams
- Up to 64GB MicroSD Card Local Storage
- 802.3af PoE
- OnVIF Supported



AirLive FE-501DM is a fisheye panorama network indoor dome camera featured with 5 MegaPixel resolution and rich functions. The fisheye lens provides 360° panoramic wide-angle view without blind spot. It is very suitable to view in a wide area, such as parking lot, airport, theme park, with one single camera.

180° Broad View



360° Source View



Quad View



3 PTZ with source View



High Quality 5.0 MegaPixel Image

AirLive FE-501DM equips a 5 MegaPixel sensor for capturing the high quality video stream. With this sensor, FE-501DM is capable to capture images up to 1920 x 1920 resolution; this provides you more details in image at all types of view

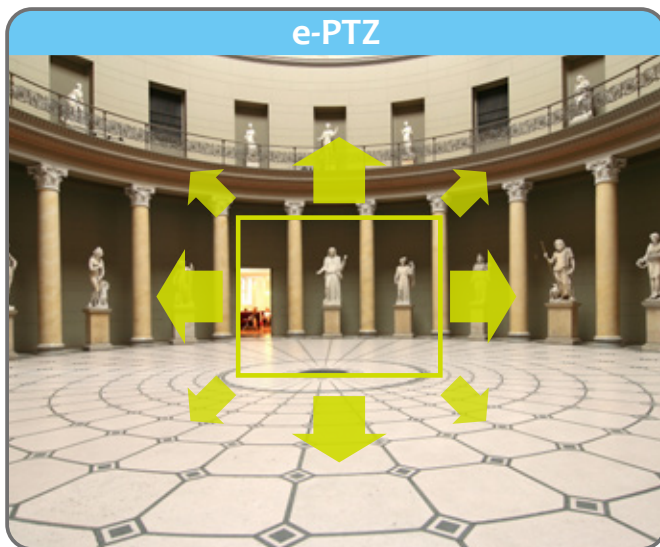
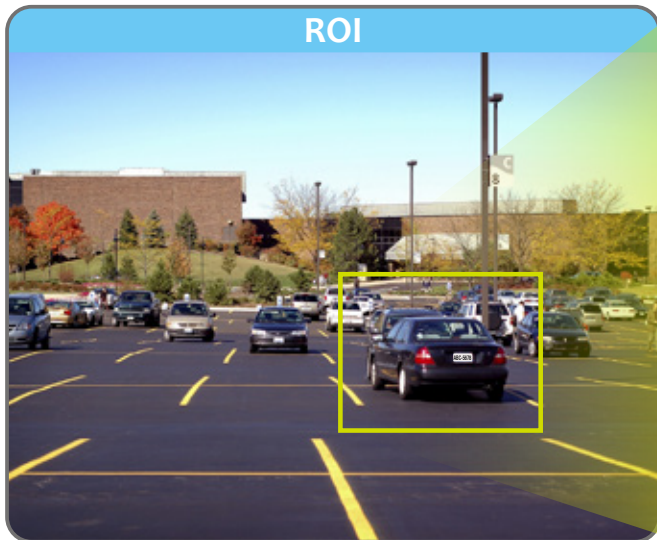


5 Independent Streams

AirLive FE-501DM equips with 5 independent streams at ROI mode. Each split screen is independent for storage and connect individually to save your bandwidth and loading in your computer.

ROI with e-PTZ Function

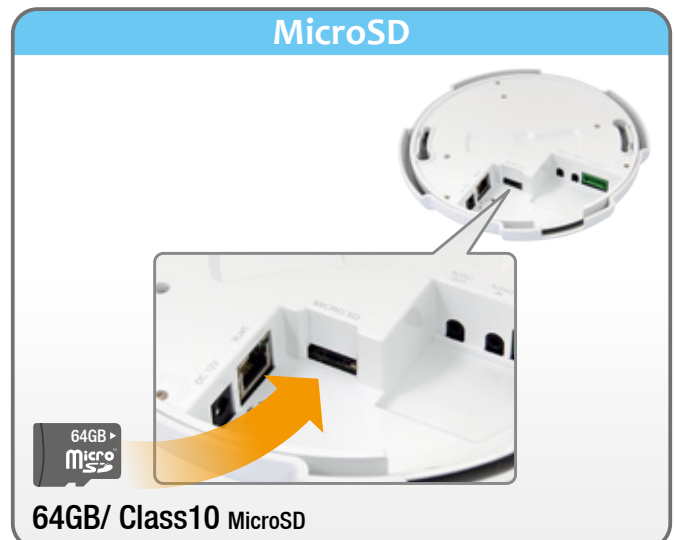
AirLive FE-501DM also equipped with ROI (Region of Interest) feature. The ROI displays a selected area from main screen to split screen. It provides more details of image without changing the view.



Using the e-PTZ function, all view angles can be adjusted by a "mouse-click" to simulate Pan, Tilt and Zoom function on each split screen, which provides you extra convenience and security.

Up to 64GB MicroSD Local Storage or Remote Save Path

MicroSD card becomes more popular for local storage in IP cameras. Once you setup the camera and MicroSD card correctly, you may easily save the video to MicroSD local storage or to the remote via network.



Manufacturer

OvisLink Corp.

5F, No.96, Min-Chuan Rd., Hsin-Tien Dist., New Taipei City 231, TAIWAN

www.airlive.com

Support Built-in Microphone and Speaker

AirLive FE-501DM has the built-in microphone and speaker, so a user can use two-way audio function without external audio devices.

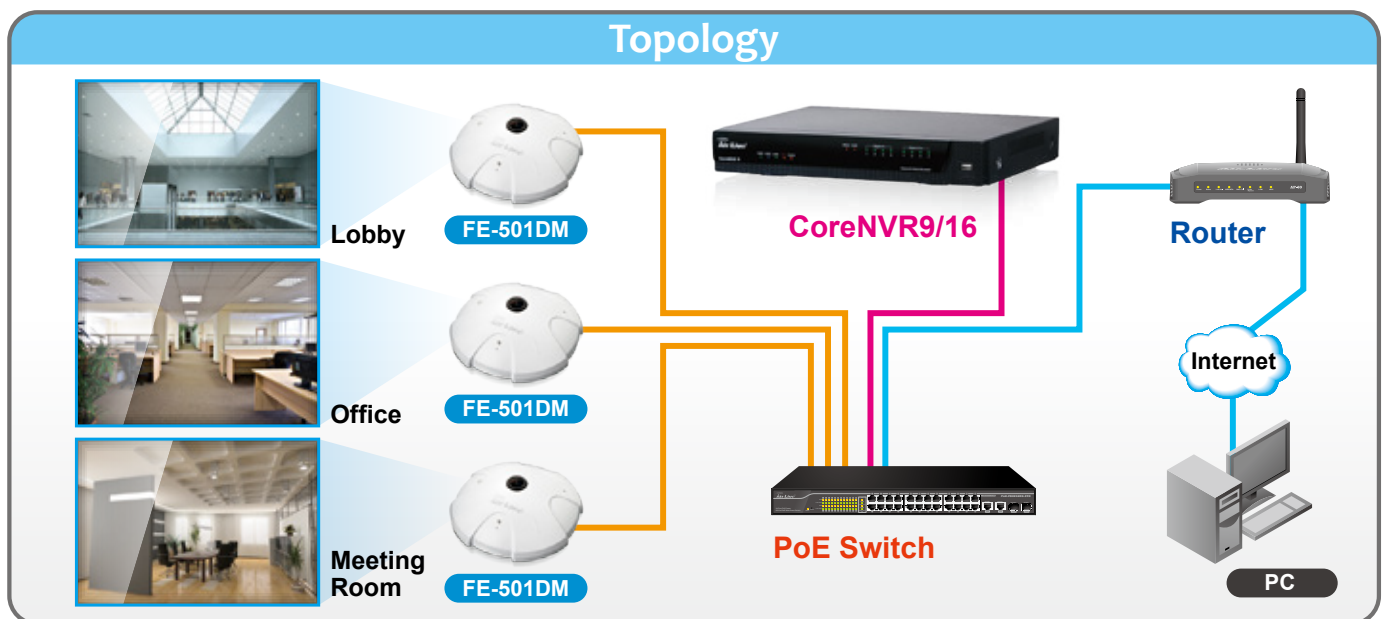
Free 64 Channel Live View and Recording through CamPro Express

The FE-501DM also supports CamPro Express, the free bundle VMS software that lets user to view and record multiple channels simultaneously. Therefore, you may easily build up a surveillance system at different environments.



Connect to CoreNVR9/16

AirLive CoreNVR9/16 is a standalone system which is able to connect multiple cameras to a machine for professional management with many useful features. It also supports up to 256 channel free CMS software to manage multiple CoreNVR systems. It is the most efficient way to manage your cameras under the network.



CamPro Mobile for iOS and Android

The FE-501DM can be connected by your iPhone/iPad and Android devices via AirLive CamPro Mobile APP, so you may easily access FE-501DM whenever you have network connection for live viewing and even playback the video event online on your mobile devices.



CamPro Mobile



Live viewing on
iOS and **Android** Mobile Devices

Specifications

Camera

Camera Type

- Fisheye Type

Image Sensor

- 1 / 2.5" CMOS Sensor
- in 2592 x 1944 resolution

Max. Resolution

- 1920x1920

Field of View

- 180° (Horizontal/Vertical/Diagonal)

Lens Type

- 1.05 mm

Day/Night

- Removable IR-Cut for Day/Night image

WDR Enhancement

- Yes

Minimum Illumination

- Color: 1.9 Lux@F2.8
- B/W: 0.1 Lux @F2.8

Mechanical IR-Cut Filter

- Yes

Pan/Tilt/Zoom

- E-PTZ with 10x Digital Zoom

Video

Video Compression

- H.264, MJPEG & MPEG4

Video Mode

- 360° Source View, 360° Broad View,
- 180° Double Broad View,
- Triple View, Quad View,
- 3 PTZ with Source View,

Resolution and Frame Rate

- 15fps@ 1920x1920
- 15fps@ 1620x1080
- 30fps@ 1600x1200
- 30fps@ 640x480

Streaming

- 5 simultaneous streams at ROI Mode
- 3 simultaneous streams at Normal Mode
- Streaming over UDP, TCP, HTTP
- ROI (Region of Interest) Provide for 5 Independent Streams
- Configurable frame rate and bandwidth
- Support CBR and VBR

Image Setting

- AE, AWB
- Noise Reduction
- Exposure Value / Saturation / Brightness / Sharpness / Contrast
- auto gain control
- Mirror / Flip
- EV luminance control
- Privacy Mask
- Text, Time and Date OSD

ROI

- Provide for 5 Independent Streams

Digital Zoom

- 10x

Network

Ethernet

- 10/100M Auto Negotiation

Network

- IEEE 802.3af PoE

Protocols

- HTTP,HTTPS, TCP/ IP,IPv4, UDP, SMTP, FTP, DHCP, DDNS, NTP, DNS, ARP,RTSP, RTP, UPnP, OnVIF(Profile S), Multicast

Users

- 10 Simultaneous Unicast Users

Security

- Password Protection
- IP Address Filtering
- User Access Log

Audio

Audio Encoder

- G.711u

Audio Streaming

- Two-Way Audio

Audio Input / Output

- Built-in Microphone and Speaker

System Integration

Software

- CamPro Express 64, CamPro Professional
- Search & Installation- IP Wizard II

Event Triggers

- Motion detection
- Manual trigger
- Periodical trigger
- Digital input
- System boot
- Recording notification

Motion Detection

- Up to 10 zones

Application Programming Interface

- OnVIF
- Open API for Software Integration

Video Buffer

- Max. 10sec Pre-Alarm
- Max. 10sec Post-Alarm

Alarm Events

- HTTP, SMTP, FTP and NAS server

Continuous Recording

- Continue Recording to SD / NAS server

Certificate

- CE, FCC Class B, LVD

Viewing System

OS

- Windows® 2000, XP, Vista, 7, 8

Browser

- IE 7.0 or later, Firefox, Safari, Chrome

Mobile Device

- iOS, Android

General

Power Supply

- DC12V/1A
- 802.3af PoE

Power Consumption

- Max. 5.1W (DC12V)
- Max 5.3W (PoE)

Connectors

- RJ-45 cable connector for Network/PoE connection
- Audio input
- Audio output
- DC 12V power input
- Digital input*1
- Digital output*2
- MicroSD Card Slot
- Reset Button

Environment

- Operation Temp: 0°C ~ 50°C
- Humidity: 10% ~ 80%

Dimensions

- 196 x 57.3mm

Weight

- 350g

MicroSD card slot

- SDHC/SDXC 64GB

Ordering Information:

AirLive FE-501DM 5MP Fisheye Indoor PoE Dome Camera